



WAN OPARO UGANDA ASSOCIATION

**PROJECT:**

**CONSTRUCTION OF NEW KITCHEN HOUSE AND RENOVATION OF CLASSROOM  
BLOCK AT NAKIVUBO SETTLEMENT PRIMARY SCHOOL**



EXISTING KITCHEN HOUSE



PROPOSED NEW KITCHEN HOUSE

**PROGRESS REPORT:**

**AT COMPLETION**

**PREPARED BY:**

**WAN OPARO UGANDA ASSOCIATION**

**REPORTING PERIOD:**

**19<sup>TH</sup> FEBRUARY 2024 TO 5<sup>TH</sup> APRIL 2024**

## Table of Contents

1. INTRODUCTION:	3
1.1. PROJECT DETAILS	3
1.2. PROJECT OBJECTIVES:	3
1.3. PROGRESS SUMMARY	3
1.3.1. COMPLETED PROJECT COMPONENT	3
1.3.2. PENDING PROJECT COMPONENT	4
1.4. SITE LOCATION FOR THE COMPLETED KITCHEN HOUSE	4
1.5. SCOPE OF WORKS:	4
2. MOBILISATION:	5
2.1. SITE STORE	5
2.2. MATERIAL ON SITE	5
2.3. TOOLS/EQUIPMENT/PLANT ON SITE	5
2.4. PERSONNEL	6
3. PHYSICAL WORKS PROGRESS:	6
3.1. PLANNED WORKS VERSUS PROGRESS ACHIEVED	6
4. FINANCIAL STATUS	7
4.1. MAJOR CHALLENGES:	8
5. FUTURE PLANS:	8
6. CONCLUSION:	8
7. PROGRESS PHOTOS:	9
7.1. EXISTING KITCHEN HOUSE	9
7.2. PROPOSED ARCHITECTURAL IMPRESSION	9
7.3. CONSTRUCTION PICTORIAL REPORT	10
7.4. EXISTING STATUS OF THE CLASSROOM BLOCK	20

## 1. INTRODUCTION:

The works on the project involve reconstruction of a New kitchen House at Nakivubo Settlement Primary School; which includes, excavation for foundation, strip foundation concrete, plinth walls, backfilling, oversite concrete, super structure walling, roofing, installation of firewood cooking stove with chimney pipe, installation of doors and windows, wall plastering, floor Screeding and painting. The project is funded with support from **Wan Oparo Uganda Association**.

### 1.1. PROJECT DETAILS

The project details are summarized in the table below:

<b>Project Name:</b>	Construction of a New Kitchen House at Nakivubo Settlement Primary School
<b>Donor:</b>	Wan Oparo Uganda Association Lira – Uganda
<b>Beneficiary:</b>	Nakivubo Settlement Primary School P.O Box 30974, Kampala - Uganda
<b>Commencement Date:</b>	19 <sup>th</sup> February 2024
<b>Duration:</b>	46 days
<b>Completion Date:</b>	5 <sup>th</sup> April 2024

### 1.2. PROJECT OBJECTIVES:

The following objectives are to be achieved upon the building handover and operations:

- i. To construct a functional kitchen house to facilitate meal preparation for students at the School.
- ii. To enhance the infrastructure and facilities of the school to support its educational mission.

### 1.3. PROGRESS SUMMARY

The original project plan included the **construction of the Kitchen House and the Renovation of the Classroom Block**, only the **Kitchen House** has been completed due to funding constraints.

#### 1.3.1. COMPLETED PROJECT COMPONENT

##### i. KITCHEN HOUSE

The construction of a modern kitchen house has been successfully completed. The kitchen house is equipped with necessary facilities for meal preparation, meeting the nutritional needs of the students.

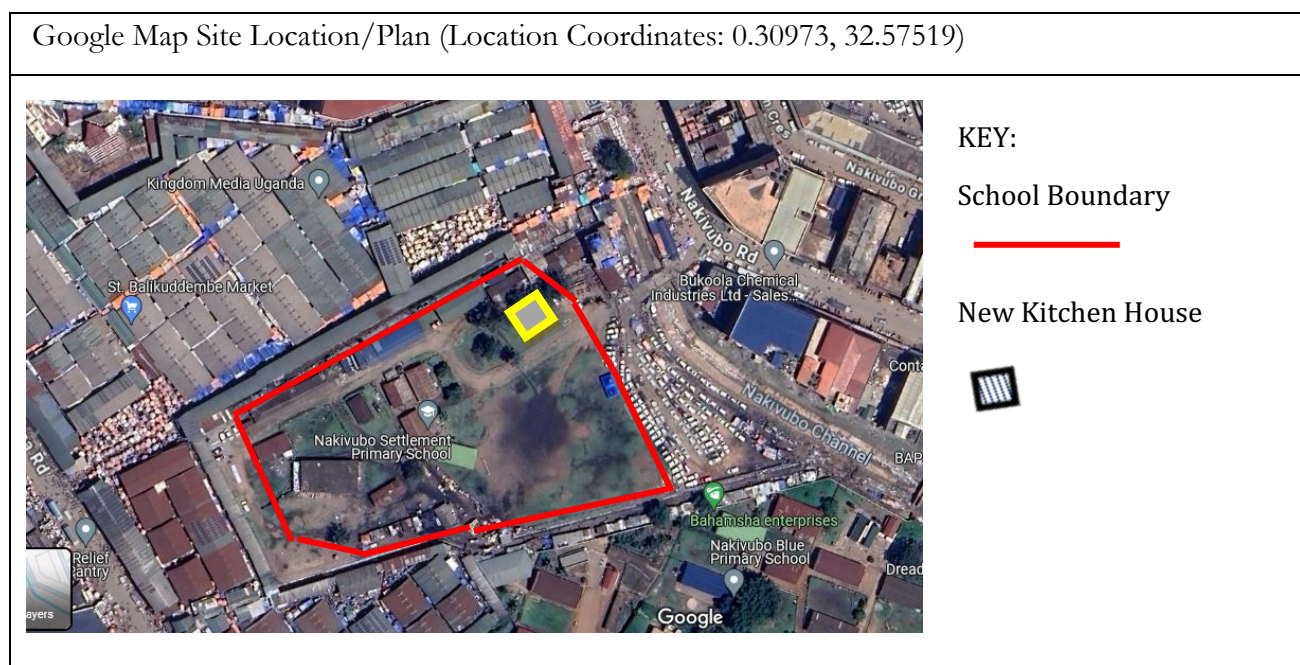
### 1.3.2. PENDING PROJECT COMPONENT

#### i. CLASSROOM BLOCK

The renovation of the classroom block, as initially planned, has been pushed to be done in the nearby future due to funding gap. Wan Oparo Uganda Association is actively seeking support from well-wishers, supporters, and partners to fulfil the construction of the classroom block so as to improve the general learning environment for the children.

### 1.4. SITE LOCATION FOR THE COMPLETED KITCHEN HOUSE

The New Kitchen House is Located within the School Premise, and the site was handed over to Wan Oparo Uganda Association by the School Administration for the new Kitchen House, with the approval of the KCCA (Kampala Capital City Authorities). The building location is as shown in the image below:



### 1.5. SCOPE OF WORKS:

- ✓ Construction of Sub-Structure (Foundation)
- ✓ Construction of Super Structure (Walling & Ring Beams)
- ✓ Construction of Serving Point Shade
- ✓ Installation of Roof
- ✓ Construction of Cooking Stove and Installation of Chimney Pipes
- ✓ Installation of Doors & Windows
- ✓ Finishes

## 2. MOBILISATION:

### 2.1. SITE STORE

The school management provided a two roomed house to be used as the site store and workers sleeping room and the workers have left the rooms upon the building completion.

### 2.2. MATERIAL ON SITE

The following materials were mobilized to site and used for the construction of the kitchen house:

S/No.	DESCRIPTION	SOURCE
1.	Coarse Aggregates for Concrete	Donated by Mukono Stirling Quarry
2.	Concrete Blocks	Donated by Mukono Stirling Yard
3.	Cement	Commercial Source
4.	Fine Aggregates (Lake Sand)	Commercial Source
5.	Gravel (Backfill Material in foundation)	Commercial Source
6.	Timber for Formwork	Commercial Source
7.	Eucalyptus poles (for setting out and to be used as scaffolds)	Commercial Source
8.	Timber for Roofing	Commercial Source
9.	Iron Sheets	Donated by Ital Aluminium Kampala
10.	Painting Materials	Commercial Source
11.	Nails	Commercial Source
12.	Doors	Commercial Source
13.	Windows	Commercial Source
14.	Glass glazing	Commercial Source

### 2.3. TOOLS/EQUIPMENT/PLANT ON SITE

The following tools/equipment/plant have been mobilised for the construction of the kitchen house at the school:

S/No.	DESCRIPTION	QUANTITY	STATUS AT COMPLETION
1.	Wheel Barrow	1 No.	In good Condition
2.	Spades	2 No.	In good Condition
3.	Pick Axe + Handle	2 No.	1 broken & 1 in fair condition
4.	Hoe + Handle	1 No.	In good Condition
5.	Measuring Tape (50 Meters)	1 No.	In good Condition
6.	Bow Saw + Blade	1 Set	In good Condition
7.	Hired Jumping Compactor	1 No.	Demobilized upon completion of backfill in foundation
8.	Painting Brush	2 Sets	Worn-out

## 2.4. PERSONNEL

The following personnel have been mobilised during the works execution, and they were engaged basing on a lump sum contract:

S/No.	NAME	TITLE	NATIONALITY	STATUS
1.	Mr. Okwairwoth Pius	Coordinator / Site Supervisor	Ugandan	Working
2.	Mr. Matovu Fred	Mason/Headman	Ugandan	Demobilized
3.	Mr. Kumakech Erick	Mason/Headman	Ugandan	Demobilized
4.	Owachgiu James	Mason	Ugandan	Demobilized
5.	Mr. Lwebuga Julius	Mason	Ugandan	Demobilized
6.	Mr. Ngobi Fayizi	Unskilled Labour	Ugandan	Demobilized
7.	Mr. Byamukama Erick	Unskilled Labour	Ugandan	Demobilized

## 3. PHYSICAL WORKS PROGRESS:

### 3.1. PLANNED WORKS VERSUS PROGRESS ACHIEVED

The table shows the planned works versus the actual progress achieved:

S/No.	DESCRIPTION	UNIT	SCOPE QUANTITY	PERCENTAGE PROGRESS	
				PLANNED	ACTUAL
<b>A].</b>	<b>FOUNDATION</b>				
	1. Excavation	m <sup>3</sup>	6.72	100.00%	100.00%
	2. Foundation Concrete	m <sup>3</sup>	1.12	100.00%	100.00%
	3. Plinth Wall + Veranda	m <sup>2</sup>	40.92	100.00%	100.00%
	4. Backfill	m <sup>3</sup>	20.00	100.00%	100.00%
	5. Oversite Concrete (Ground Floor Slabs)	m <sup>3</sup>	4.00	100.00%	100.00%
	<b>AVERAGE PROGRESS - A</b>			<b>100.00%</b>	<b>100.00%</b>
<b>B].</b>	<b>SUPER STRUCTURE</b>				
	1. Kitchen House Walling + Work Tops	m <sup>2</sup>	73.08	100.00%	100.00%
	2. Serving Point Shade Steel Poles (Steel Columns)	No.	6.00	100.00%	100.00%
	<b>AVERAGE PROGRESS - B</b>			<b>100.00%</b>	<b>100.00%</b>
<b>C].</b>	<b>ROOFING</b>				
	1. Timber Trusses	Set.	6.00	100.00%	100.00%
	2. Roof Covering	m <sup>2</sup>	61.76	100.00%	100.00%
	3. Fascia Board	No.	10.00	100.00%	100.00%

S/No.	DESCRIPTION	UNIT	SCOPE QUANTITY	PERCENTAGE PROGRESS	
				PLANNED	ACTUAL
<b>AVERAGE PROGRESS - C</b>				<b>100.00%</b>	<b>100.00%</b>
<b>Dj.</b>	<b>FITTINGS</b>				
	1. Door	No.	1.00	100.00%	100.00%
	2. Windows (1.6m x 1.2m)	No.	2.00	100.00%	100.00%
	3. Steel Ventilation Louvers (1.5m x 0.5m)	No.	1.00	100.00%	100.00%
<b>AVERAGE PROGRESS - D</b>				<b>100.00%</b>	<b>100.00%</b>
<b>Dj.</b>	<b>FINISHES</b>				
	1. Plastering	m <sup>2</sup>	176.00	100.00%	100.00%
	2. Painting	m <sup>2</sup>	176.00	100.00%	100.00%
	3. Floor Screeding	m <sup>2</sup>	55.00	100.00%	100.00%
<b>AVERAGE PROGRESS - D</b>				<b>100.00%</b>	<b>100.00%</b>
<b>OVERALL PROGRESS</b>				<b>100.00%</b>	<b>100.00%</b>
<b>TIME LAPSE</b>				<b>100.00%</b>	<b>100.00%</b>

## 4. FINANCIAL STATUS

Table below shows the breakdown of the financial status:

S/No.	ACTIVITY	AMOUNT
<b>Aj.</b>	<b>DONATION RECIEVED</b>	
	<i>Exchange rate Euro to Ugx – 4,080Ugx</i>	
	(i). Batch – 1 (Euro 5,000)	20,400,000 Ugx
	(ii). Batch – 2 (Euro 200)	816,000 Ugx
<b>TOTAL - A</b>		<b>21,216,000 Ugx</b>
<b>Bj.</b>	<b>EXPENDITURE</b>	
	(i). Materials Purchase	13,250,000Ugx
	(ii). Labour Expense	1,900,000Ugx
<b>TOTAL - B</b>		<b>15,150,000 Ugx</b>
<b>CASH AT HAND (A – B)</b>		<b>6,066,000 Ugx</b>



#### **4.1. MAJOR CHALLENGES:**

The work was progressing smoothly with no major challenges encountered during the execution:

#### **5. FUTURE PLANS:**

- Wan Oparo Uganda Association remains committed to completing the renovation of the classroom block once sufficient funding is secured.
- Continued collaboration with supporters and partners to ensure the successful implementation of future projects aimed at improving educational infrastructures and health facilities within the local community in Uganda.

#### **6. CONCLUSION:**

Wan Oparo Uganda Association has successfully completed the construction of the kitchen house at Nakivubo Settlement Primary School, contributing to the improvement of educational facilities. The organization expresses its gratitude to all the donors involved and looks forward to continuing its efforts to support schools and the local communities within Uganda in improving learning environments through facilities face-lifting.



## 7. PROGRESS PHOTOS:

### 7.1. EXISTING KITCHEN HOUSE

Fig. 1: Existing Kitchen House



Fig. 2: Existing Kitchen House



### 7.2. PROPOSED ARCHITECTURAL IMPRESSION

Fig. 3: New Kitchen House





### 7.3. CONSTRUCTION PICTORIAL REPORT

Fig. 1: Excavation for Foundation



Fig. 2: Excavation for Foundation



Fig. 3: Excavation for Foundation



Fig. 4: Excavation for Foundation





Fig. 5: Mixing of Concrete for Foundation



Fig. 6: Levelling and compaction of Concrete for Foundation



Fig. 7: Construction of Foundation (plinth) Walls



Fig. 8: Construction of Veranda walls





Fig. 9: Compaction of Backfill Material in Foundation



Fig. 10: Compaction of Backfill Material in Foundation



Fig. 11: Installation of Steel Column Posts for Serving Point Shade



Fig. 12: Installation of Steel Column Posts for Serving Point Shade



Fig. 13: Casting ground floor concrete slab



Fig. 14: Super Structure Walling





Fig. 15: Super Structure Walling



Fig. 16: Super Structure Walling



Fig. 17: Over Beam Walling



Fig. 18: Over Beam Walling



Fig. 19: Roof Truss Framing



Fig. 20: Roof Truss Framing



Fig. 21: Assembling Roof Trusses







Fig. 22: Roof Covering





Fig. 23: Plastering



Fig. 24: Installation of Windows



Fig. 25: Finishes on Veranda



Fig. 26: Finishes around windows



Fig. 27: Painting the exterior





Fig. 28: Painting the exterior



Fig. 29: Painting the exterior



Fig. 30: Painting the interior



Fig. 31: Painting steel casement for windows





## 7.4. EXISTING STATUS OF THE CLASSROOM BLOCK

Fig. 32: Existing classroom block with asbestos roof covering:-  
Waiting for more Funds to implement renovation works at the school block, (replacement of the asbestos with an environmentally and health safe material, installation of new windows and doors, plastering and painting of the wall structures, estimated budget UShs. 160,000,000.

